



16 Kingfield Lodge Kingfield Road, Sheffield S11 9AS

Saxton Mee

Lettings

16 Kingfield Lodge Kingfield

Per Calendar Month

£990 Per Calendar

****WATER & HEATING IS INCLUDED WITHIN THE RENT****

An excellent opportunity to rent this beautifully maintained one-bedroom top-floor apartment, perfectly positioned in a sought-after location with an array of local shops, cafés, and everyday conveniences nearby. Offering superb links to both the breathtaking Peak District and the lively Sheffield City Centre, it's an ideal choice for anyone looking for both comfort and accessibility.

The apartment is accessible via lift or stairs and opens into a welcoming entrance hall. The lounge offers a relaxing living space leading through to a fitted kitchen. The main double bedroom features a walk-in wardrobe, while the bathroom offers a sleek shower unit. For additional practicality, residents benefit from a communal laundry room.

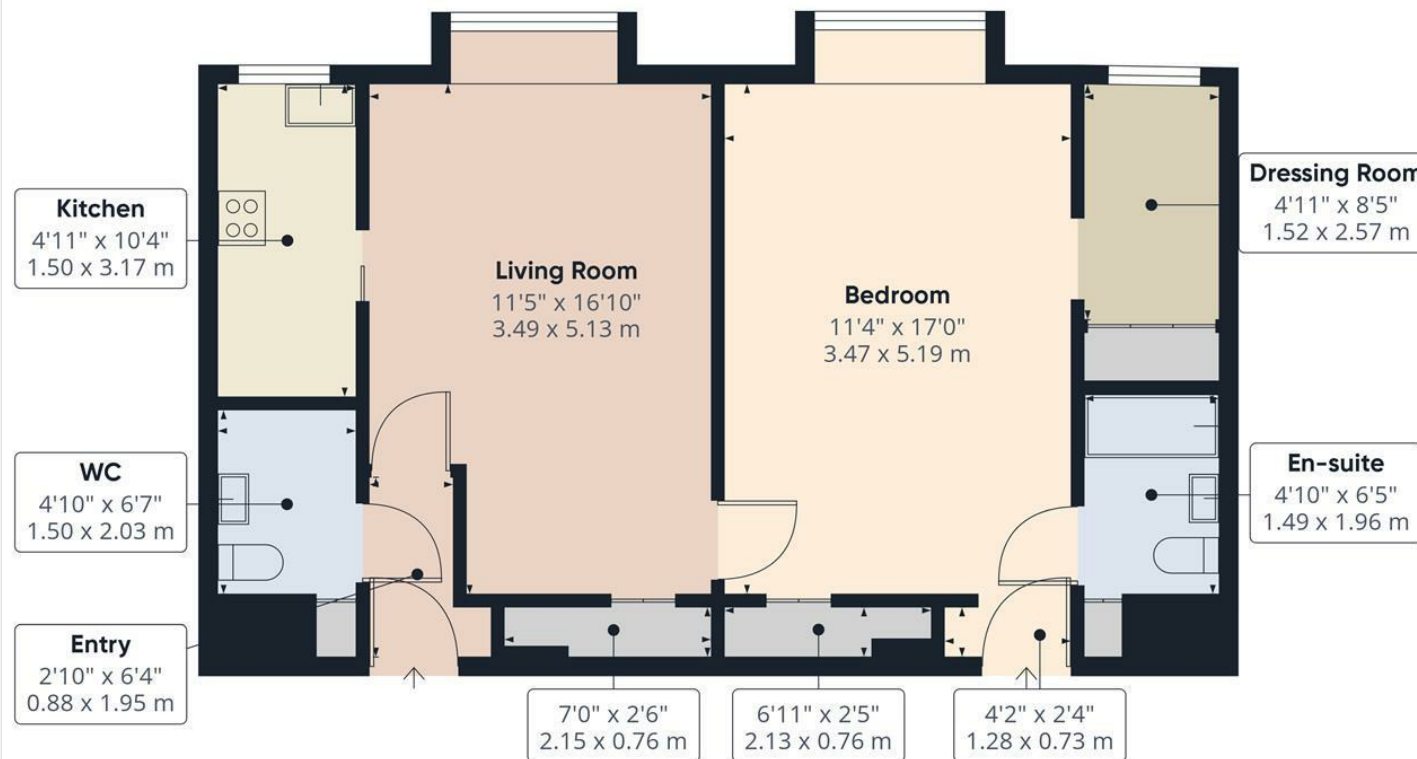
Externally, parking is available on a first-come, first-served basis. The property is let unfurnished and is strictly non-smoking. It falls under Council Tax Band A, with the Energy Performance Certificate currently pending.

Viewings are highly recommended—contact us today to arrange yours.



- Large One Bedroom Flat
- Water & Heating Included
- Sought After Location
- Available Immediately
- Access to communal laundry facilities





Approximate total area^m
626 ft²
58.2 m²

(1) Excluding balconies and terraces

Calculations reference the RICS IPMS:
3C standard. Measurements are
approximate and not to scale. This
floor plan is intended for illustration
only.

GIRAFFE360

While we endeavour to make our sales particulars fair, accurate and reliable, they are only a general guide to the property and, accordingly, if there is any point, which is of particular importance to you, please contact the relevant office. The Agents have not tested any apparatus, equipment, fittings or services and so cannot verify they are in working order. The buyer is advised to obtain verification. Please note all the measurement details are approximate and should not be relied upon as exact. All plans, floor plans and maps are for guidance purposes only and are not to scale. Under no circumstances should they be relied upon as exact or for use in planning carpets and other such fixtures, fittings or furnishings. YOUR HOME IS AT RISK IF YOU DO NOT KEEP UP REPAYMENTS ON A MORTGAGE OR OTHER LOAN SECURED ON IT. 'A Life Assurance policy may be requested.' 'Written Quotations of credit terms available on request.'

Banner Cross
T: 0114 268 3241
E: bannercross@saxtonmee.co.uk
www.saxtonmee.co.uk

Hathersage
T: 01433 650009
E: hathersage@saxtonmee.co.uk

Bakewell
T: 01629 815307
E: bakewell@saxtonmee.co.uk

Matlock
T: 01629 828250
E: matlock@saxtonmee.co.uk